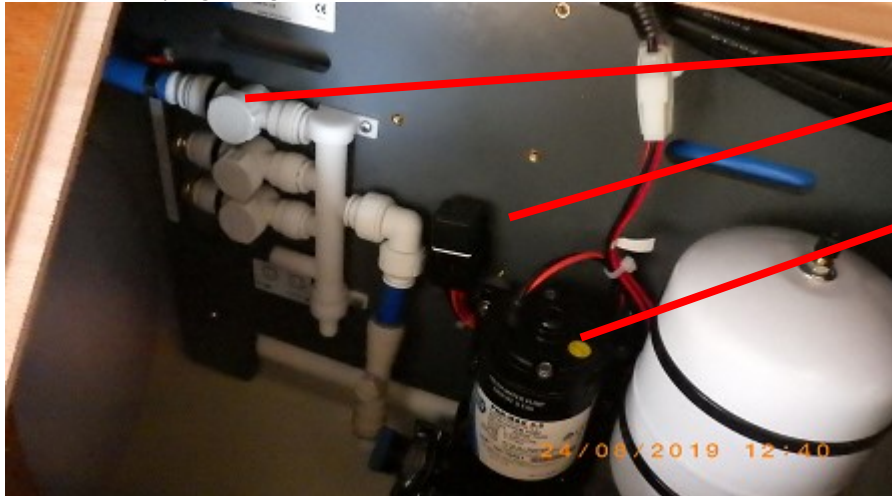


15.FRESH WATER SYSTEM

The sailing yacht is equipped with one fresh water tanks .They are filled via fresh water fillers marked "WATER".



Unscrew the plug using a winch handle. A fresh water level indicator is located on the electrical control panel.



Water tank valves

Water pump fuse

Water pump

CAUTION: After filling the tanks, close the fillers carefully and screw the tight to avoid the risk of seawater entering the fresh water tanks. To avoid the risk of contaminating one liquid with the other one, never fill fresh water and fuel at the same time.

An electrical fresh water pump located under the seats in saloon is used to pump fresh water to the consumers. The fresh water pump is automatically shut off by a pressure valve when pressure reaches 1.5 bar.

Please ensure that the correct fillers are used, NOT the holding tanks, NOT the diesel tank.

To use the fresh water system, turn on the water systems breaker on the 12v panel and open a faucet. **When a tank run out of water and almost empty, the pump will run at high speed and the faucet will start to cough air. As soon as you hear the pump running continuously, check to see if anyone is using water. If not, switch off the pump immediately to prevent the pump from drawing more air into the system or the pump overheating.**



Use the button on the 12v panel to confirm if your tank is empty.

CAUTION: Take care not to operate the electric pump when the fresh water tanks are empty.

Always open the sink and waste water seacocks when using fresh water from the tanks.

16.HOT WATER SYSTEM

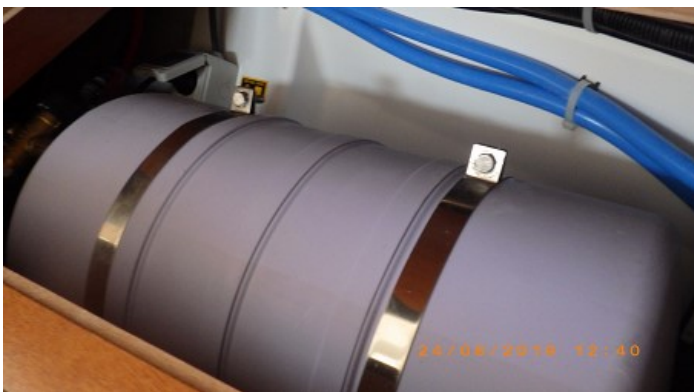
A separate hot water system leads hot water from the water heater to the users. The hot water system is filled with fresh water from the fresh water system. When the empty hot water system is being filled, open the hot water seacocks at the taps to let air out of the system. With Fresh water is heated in two ways:

-the coolant water from the engine when the engine is in operation. The coolant water runs through the water heater where it is used to heat the fresh water filled from the fresh water system.

-With an electrical spiral that can be turned on when the boat is connected to a 230V supply.

CAUTION: Do not operate the water heater if the fresh water system is empty.

Do not turn the water heater on if the fresh water system is empty.



Water boiler/heater is located under the port seats in saloon.